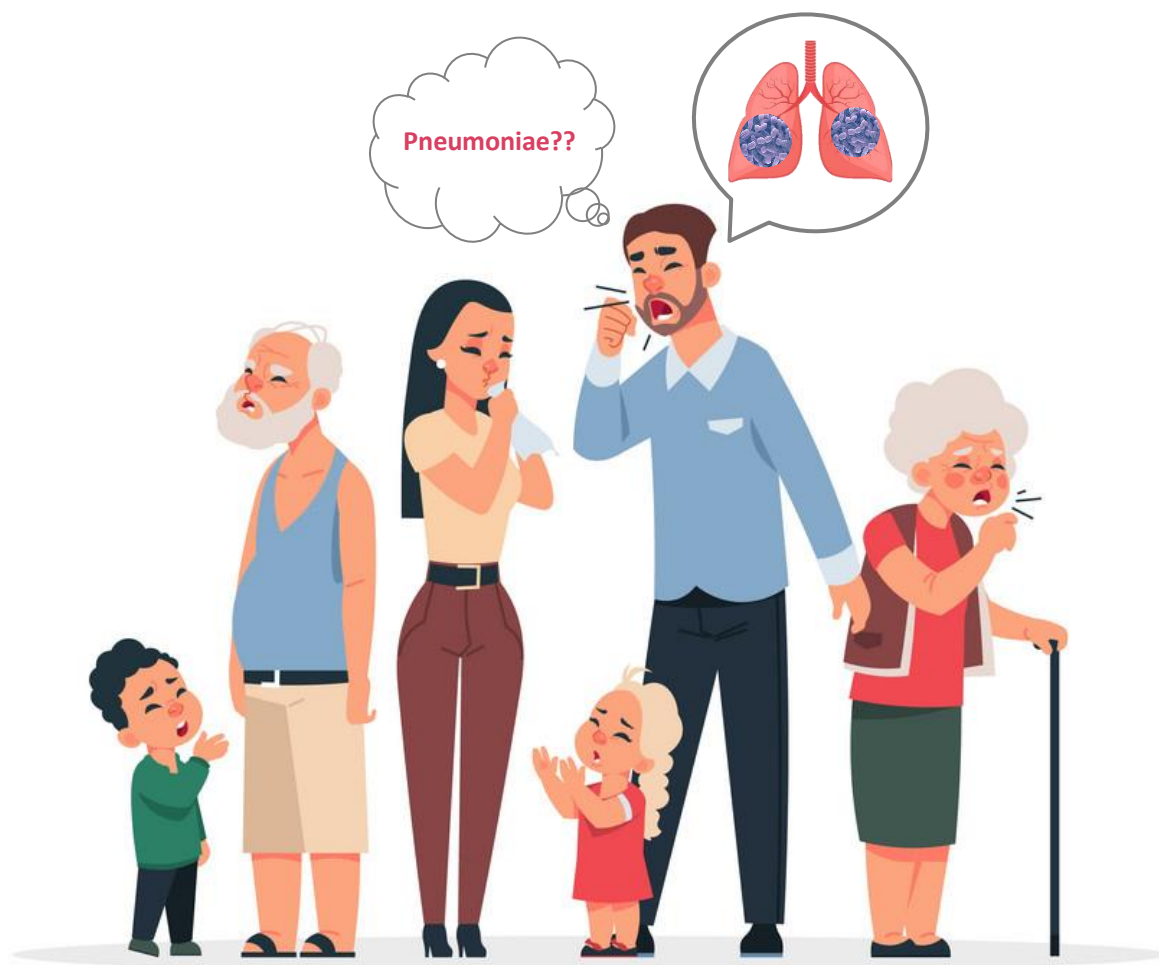


LiliF™ Streptococcus pneumoniae Ag Rapid kit



Rapid tests for the qualitative detection of Streptococcus pneumoniae Antigen from Human Urine specimen

Test Benefits

- Easy procedure with minimal hands-on time
- Stored at Room temperature
- No pre-treatment of urine with lysis buffer
- Result within 10 minutes



Know the Cause Now



LiliF™ Streptococcus pneumoniae Ag Rapid kit

LiliF™ Streptococcus pneumoniae Ag rapid kit uses Immuno-Chromatographic Assay to diagnose pneumococcus, the causative agent of pneumonia, which is a major disease. It can be read within 10 minutes.

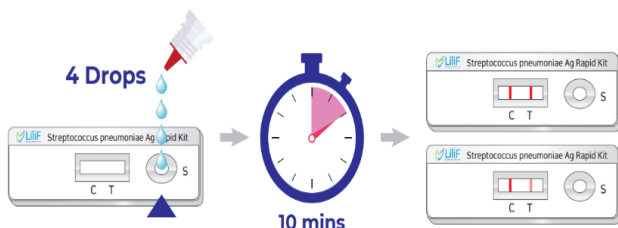
● Process of Rapid Ag test

1) Sample (Urine) collection & Preparation

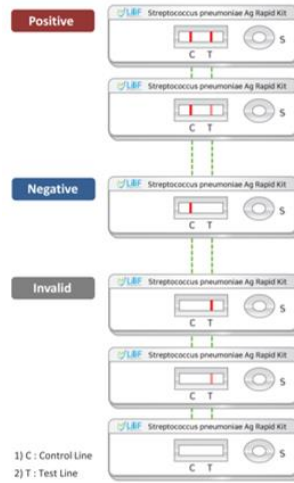
- Step 1 : The sample uses human urine.
- Step 2 : Specimens are collected in a standard container, stored at room temperature (15~30°C), and tested within 24 hours of collection. If the test is delayed, the sample can be stored at 2-8°C for 14 days. As an antiseptic, you can use boric acid. If necessary, the sample can be transported through a leak-proof container at 2~8°C. All samples should be brought to room temperature prior to testing.

2) Method of Inspection

- Step 1 : If the samples and reagents are refrigerated, leave them at room temperature 30 minutes before the start of the experiment.
- Step 2 : Take out the test device required for inspection from the sealed packaging and place it on a flat place.
- Step 3 : Take 20 µl of urine with a dropper (or micropipette) and inject it to be absorbed into the sample pad at the bottom of the sample injection unit (S), and immediately drop 4 drops of the sample diluent into the sample injection unit (S) .
- Step 4 : Wait until a red band appears in the control line (C) area (10 min). The result is read within 10 minutes after the start of the test, and the red band that appears after 10 minutes is not included in the result determination.



● Interpretation of Test Result



- **POSITIVE** : If the control line (C) appears as a red band and the test line (T) appears as a red band, it is judged as positive.
- **NEGATIVE** : When a red band does not appear on the test line (T) and a red band appears only on the control line (C), it is judged as negative.
- **INVALID** : If a red band does not appear on the control line (C) regardless of the test line (T), it is judged invalid and retested.

● Performance Characteristics

LiliF™ Streptococcus pneumoniae Ag Rapid kit		Hospitalized Patient Performance (RDT)		
		Positive	Negative	Total
Kit Result	Positive	42	0	42
	Negative	1	100	101
	Total	43	100	143
Sensitivity		97.7% (42/43)		
Specificity		100% (100/100)		

● Product Detail & information

• Product Name	LiliF™ Streptococcus pneumoniae Ag Rapid kit
• Target / Reactivity	Streptococcus pneumoniae Ag / Human
• Storage / Shelf life	Store the kit at room temperature / 4°C~ 30°C / 18 month
• Insert	20 tests per 1 kit / Test Device (20ea) , Sample Dilution (2ea) , Dropper (20ea) , Manual (1ea)
• Sample Type	Urine
• Cat. No.	IRH41631
• Packaging unit	20 Tests